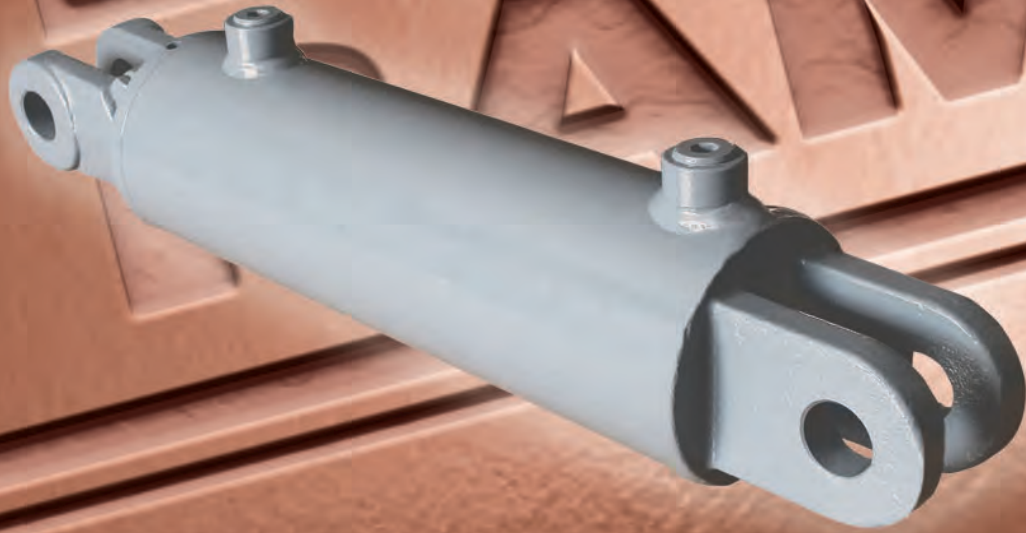




YORK WELDED CYLINDERS



OEM HYDRAULIC CYLINDER SPECIALISTS



YORK CROSS TUBE

The YORK Cross Tube is a high quality welded cylinder utilizing a strong forged steel cross tube base and welded rod cross tube with grease zerks. Designed for performance, the YORK cylinder has a heavy duty piston and piston stem. The internally threaded gland reduces the cross section and is easily removed for maintenance. YORK Cross Tube cylinders are well suited for light to medium duty applications.

STANDARD FEATURES

Intended Use:	Double acting applications	Piston Material:	Ductile iron 65-45-12 (ASTM A536)
Rated Pressure:	3000 PSI	Piston Locknut:	High tensile grade C
Rod Material:	High tensile SAE C1045, ground and polished hard chrome plated	End Mounts:	Cross tube
Barrel Material:	High tensile SAE C1026/St52.3 cold drawn tube precision honed for extended seal life	Ports:	SAE
Gland Material:	Ductile iron 65-45-12 (ASTM A536)	Port Plugs:	High quality steel
		Internal Seals:	North American
		Paint Finish:	2 part urethane black
		Testing:	100% full cycle tested

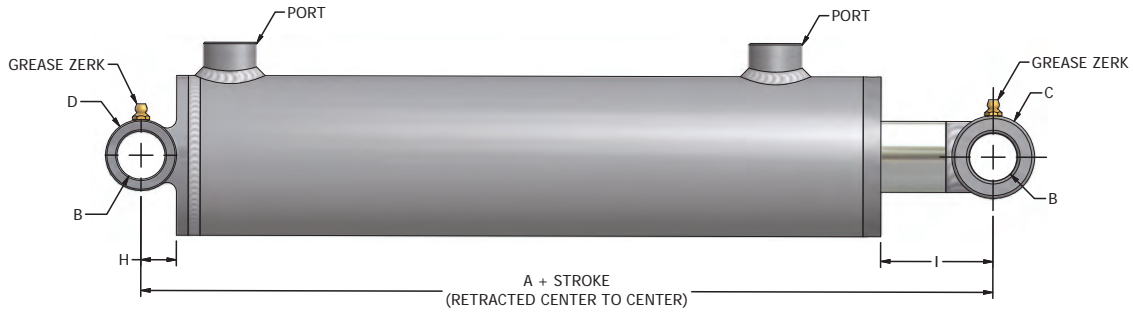
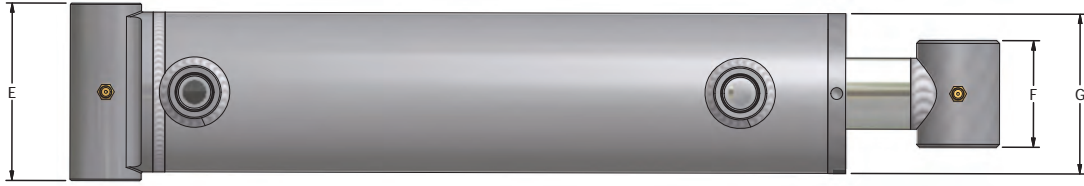
Bore (inches)	RAM Part Number	Stroke (inches)	Rod Diameter (inches)	Pin Center to Center (inches)		Ports	Pin Diameter Nominal (inches)	Maximum Rated Pressure & Column Load on Full Extension		Shipping Weight (lbs)
				Retracted	Extended			Pressure (PSI)	Load (lbf)	
1.50	R4507500	4	1.000	12	16	SAE-6	0.750	3000	5300	6
	R4507501	6		14	20					7
	R4507502	8		16	24					8
	R4507503	10		18	28					9
	R4507504	16		24	40					12
	R4507505	20		28	48					14
	R4507506	24	32	56			2940	5200	14	
							2165	3825	16	
2.00	R4507507	4	1.250	12	16	SAE-6	1.000	3000	9425	10
	R4507508	6		14	20					12
	R4507509	8		16	24					13
	R4507510	10		18	28					14
	R4507511	12		20	32					16
	R4507512	14		22	36					17
	R4507513	16		24	40					19
	R4507514	18		26	44					20
	R4507515	20		28	48					21
	R4507516	24		32	56					24
	R4507517	30		38	68					29
	R4507518	32		40	72					30
	R4507519	36		44	80					33
	R4507520	40		48	88					36
R4507521	48	56	104	42						
2.50	R4507522	4	1.500	12	16	SAE-6	1.000	3000	14725	14
	R4507523	6		14	20					16
	R4507524	8		16	24					18
	R4507525	10		18	28					19
	R4507526	12		20	32					21
	R4507527	14		22	36					23
	R4507528	16		24	40					25
	R4507529	18		26	44					27
	R4507530	20		28	48					29
	R4507531	24		32	56					33
	R4507532	30		38	68					39
	R4507533	32		40	72					40
	R4507534	36		44	80					44
	R4507535	40		48	88					48
	R4507536	48		56	104					56
							2525	12395	40	
							2030	9980	44	
							1670	8210	48	
							1190	5835	56	

All specifications are subject to change without notice.
All weights are approximate shipping weights.

Bore (inches)	RAM Part Number	Stroke (inches)	Rod Diameter (inches)	Pin Center to Center (inches)		Ports	Pin Diameter Nominal (inches)	Maximum Rated Pressure & Column Load on Full Extension		Shipping Weight (lbs)
				Retracted	Extended			Pressure (PSI)	Load (lbf)	
3.00	R4507537	4	1.500	12	16	SAE-8	1.000	3000	21205	17
	R4507538	6		14	20					19
	R4507539	8		16	24					21
	R4507540	10		18	28					23
	R4507541	12		20	32					26
	R4507542	14		22	36					28
	R4507543	16		24	40					30
	R4507544	18		26	44					32
	R4507545	20		28	48					34
	R4507546	24		32	56					38
	R4507547	30		38	68			44		
	R4507548	32		40	72			46		
	R4507549	36		44	80			50		
	R4507550	40		48	88			55		
R4507551	48	56	104	63						
3.50	R4507552	4	1.750	12	16	SAE-8	1.000	3000	28860	24
	R4507553	6		14	20					26
	R4507554	8		16	24					29
	R4507555	10		18	28					31
	R4507556	12		20	32					34
	R4507557	14		22	36					37
	R4507558	16		24	40					39
	R4507559	18		26	44					42
	R4507560	20		28	48					44
	R4507561	24		32	56					50
	R4507562	30		38	68			57		
	R4507563	32		40	72			60		
	R4507564	36		44	80			65		
	R4507565	40		48	88			70		
R4507566	48	56	104	80						
4.00	R4507567	4	2.000	12	16	SAE-8	1.250	3000	37700	32
	R4507568	6		14	20					35
	R4507569	8		16	24					39
	R4507570	10		18	28					43
	R4507571	12		20	32					47
	R4507572	14		22	36					50
	R4507573	16		24	40					54
	R4507574	18		26	44					58
	R4507575	20		28	48					62
	R4507576	24		32	56					69
	R4507577	30		38	68			80		
	R4507578	32		40	72			84		
	R4507579	36		44	80			91		
	R4507580	40		48	88			98		
R4507581	48	56	104	113						

*Conforms to ASAE (American Society of Agricultural Engineers) specifications.

All specifications are subject to change without notice.
All weights are approximate shipping weights.



Bore (inches)	A	B	C	D	E	F	G	H	I	Ports
1.50	8.00	0.765	1.25	1.25	2.25	2.00	1.88	0.63	4.06	SAE-6
2.00	8.00	1.015	1.75	1.50	2.75	2.25	2.38	0.75	2.81	SAE-6
2.50	8.00	1.015	1.75	1.50	3.25	2.25	2.88	0.75	2.56	SAE-6
3.00	8.00	1.015	1.75	1.50	3.75	2.25	3.38	0.75	2.44	SAE-8
3.50	8.00	1.015	1.75	2.00	4.25	2.25	3.88	1.00	2.13	SAE-8
4.00	8.00	1.265	2.00	2.25	4.75	2.75	4.50	1.13	1.81	SAE-8

Measurements for A, B, C, D, E, F, G, H, I are in inches.

All specifications are subject to change without notice.

RAM York Cylinder Seal Kits		
Bore (inches)	RAM Part Number	Rod Diameter (inches)
1.500	R3607500	1.000
2.000	R3607507	1.250
2.500	R3607522	1.500
3.000	R3607537	1.500
3.500	R3607552	1.750
4.000	R3607567	2.000

All Specifications are subject to change without notice.
All weights are approximate shipping weights.

YORK CLEVIS

The YORK Clevis is a high quality welded cylinder utilizing a strong forged clevis mount. The rod clevis is threaded on with a clamping locking bolt that prevents thread damage. The YORK Clevis has a heavy duty piston and piston stem. The internally threaded gland reduces the cross section and is easily removed for maintenance. YORK Clevis cylinders are perfect for construction, agricultural and general use applications.

STANDARD FEATURES

- | | |
|--|---|
| Intended Use: Double acting applications | Piston Locknut: High tensile grade C |
| Rated Pressure: 3000 PSI | End Mounts: Female clevis |
| Rod Material: High tensile SAE C1045, ground and polished hard chrome plated | Clevis Clamp: Grade 8 bolt and nut |
| Barrel Material: High tensile SAE C1026/St52.3 cold drawn tube precision honed for extended seal life | Ports: SAE |
| Gland Material: Ductile iron 65-45-12 (ASTM A536) | Port Plugs: High quality steel |
| Piston Material: Ductile iron 65-45-12 (ASTM A536) | Internal Seals: North American |
| | Paint Finish: 2 part urethane black |
| | Testing: 100% full cycle tested |

Bore (inches)	RAM Part Number	Stroke (inches)	Rod Diameter (inches)	Pin Center to Center (inches)		Ports	Pin Diameter Nominal (inches)	Maximum Rated Pressure & Column Load on Full Extension		Shipping Weight (lbs)
				Retracted	Extended			Pressure (PSI)	Load (lbf)	
2.00	R4507600	4	1.250	14.25	18.25	SAE-6	1.000	3000	9425	13
	R4507601	6		16.25	22.25					14
	R4507602*	8		20.25	28.25					16
	R4507603	10		20.25	30.25					17
	R4507604	12		22.25	34.25					18
	R4507605	14		24.25	38.25					20
	R4507606	16		26.25	42.25					21
	R4507607	18		28.25	46.25					23
	R4507608	20		30.25	50.25					24
	R4507609	24		34.25	58.25					27
	R4507610	30		40.25	70.25					31
	R4507611	32		42.25	74.25					33
	R4507612	36		46.25	82.25					35
	R4507613	40		50.25	90.25					38
R4507614	48	58.25	106.25	44						
2.50	R4507615	4	1.500	14.25	18.25	SAE-6	1.000	3000	14725	16
	R4507616	6		16.25	22.25					18
	R4507617*	8		20.25	28.25					20
	R4507618	10		20.25	30.25					21
	R4507619	12		22.25	34.25					23
	R4507620	14		24.25	38.25					26
	R4507621	16		26.25	42.25					27
	R4507622	18		28.25	46.25					29
	R4507623	20		30.25	50.25					31
	R4507624	24		34.25	58.25					35
	R4507625	30		40.25	70.25					41
	R4507626	32		42.25	74.25					42
	R4507627	36		46.25	82.25					46
	R4507628	40		50.25	90.25					50
	R4507629	48		58.25	106.25					58

*Conforms to ASAE (American Society of Agricultural Engineers) specifications.

All specifications are subject to change without notice.
All weights are approximate shipping weights.

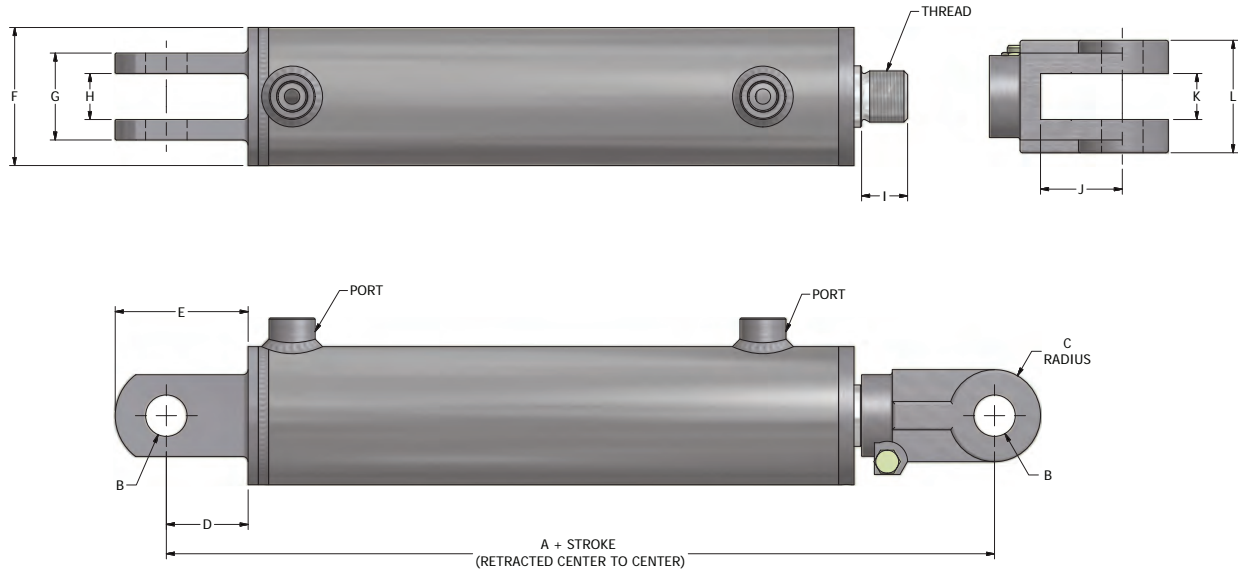


Bore (inches)	RAM Part Number	Stroke (inches)	Rod Diameter (inches)	Pin Center to Center (inches)		Ports	Pin Diameter Nominal (inches)	Maximum Rated Pressure & Column Load on Full Extension		Shipping Weight (lbs)
				Retracted	Extended			Pressure (PSI)	Load (lbf)	
3.00	R4507630	4	1.500	14.25	18.25	SAE-8	1.000	3000	21205	19
	R4507631	6		16.25	22.25					21
	R4507632*	8		20.25	28.25					24
	R4507633	10		20.25	30.25					25
	R4507634	12		22.25	34.25					27
	R4507635	14		24.25	38.25					29
	R4507636	16		26.25	42.25					31
	R4507637	18		28.25	46.25					33
	R4507638	20		30.25	50.25					35
	R4507639	24		34.25	58.25					40
	R4507640	30		40.25	70.25					46
	R4507641	32		42.25	74.25					48
	R4507642	36		46.25	82.25					52
	R4507643	40		50.25	90.25					56
	R4507644	48		58.25	106.25					64
3.50	R4507645	4	1.750	14.25	18.25	SAE-8	1.000	3000	28860	23
	R4507646	6		16.25	22.25					26
	R4507647*	8		20.25	28.25					30
	R4507648	10		20.25	30.25					31
	R4507649	12		22.25	34.25					34
	R4507650	14		24.25	38.25					36
	R4507651	16		26.25	42.25					39
	R4507652	18		28.25	46.25					41
	R4507653	20		30.25	50.25					44
	R4507654	24		34.25	58.25					49
	R4507655	30		40.25	70.25					57
	R4507656	32		42.25	74.25					60
	R4507657	36		46.25	82.25					65
	R4507658	40		50.25	90.25					70
	R4507659	48		58.25	106.25					80
4.00	R4507660	4	2.000	14.25	18.25	SAE-8	1.000	3000	37700	30
	R4507661	6		16.25	22.25					33
	R4507662*	8		20.25	28.25					39
	R4507663	10		20.25	30.25					41
	R4507664	12		22.25	34.25					45
	R4507665	14		24.25	38.25					48
	R4507666	16		26.25	42.25					52
	R4507667	18		28.25	46.25					56
	R4507668	20		30.25	50.25					59
	R4507669	24		34.25	58.25					67
	R4507670	30		40.25	70.25					78
	R4507671	32		42.25	74.25					82
	R4507672	36		46.25	82.25					89
	R4507673	40		50.25	90.25					96
	R4507674	48		58.25	106.25					111

*Conforms to ASAE (American Society of Agricultural Engineers) specifications.

All specifications are subject to change without notice.

All weights are approximate shipping weights.



Bore (inches)	A	B	C	D	E	F	G	H	I	J	K	L	Ports	Thread
2.00	10.25*	1.015	1.13	2.00	3.25	2.38	2.13	1.13	1.13	2.00	1.13	2.75	SAE-6	1.250 - 12UNF
2.50	10.25*	1.015	1.13	2.00	3.25	2.88	2.13	1.13	1.13	2.00	1.13	2.75	SAE-6	1.250 - 12UNF
3.00	10.25*	1.015	1.13	2.00	3.25	3.38	2.13	1.13	1.13	2.00	1.13	2.75	SAE-8	1.250 - 12UNF
3.50	10.25*	1.015	1.13	2.00	3.25	3.88	2.38	1.13	1.13	2.00	1.13	2.75	SAE-8	1.250 - 12UNF
4.00	10.25*	1.015	1.13	2.00	3.25	4.50	2.63	1.13	1.13	2.00	1.13	2.75	SAE-8	1.250 - 12UNF

Measurements for A, B, C, D, E, F, G, H, I, J, K, L are in inches.

* For the standard ASAE (8" stroke) cylinders this dimension is 12.25".

All specifications are subject to change without notice.

RAM York Cylinder Components			
RAM Part Number	Item	Size	Shipping Weight (lbs)
R7600455	Shaft Clevis	Fits 1 1/4" Shaft	3.30
R7600455	Shaft Clevis	Fits 1 1/2" Shaft	3.30
R7600455	Shaft Clevis	Fits 1 3/4" Shaft	3.30
R7600455	Shaft Clevis	Fits 2" Shaft	3.30
R3006631	Pin	1" x 2 7/8"	0.80
R3006632	Pin	1" x 2 1/4"	0.60
R3006300	Clip	Hairpin Clip	0.02

All specifications are subject to change without notice.
All weights are approximate shipping weights.



RAM INDUSTRIES INC.

PO Box 5007 33 York Rd E Yorkton, SK S3N3Z4 Canada

T: 1-877-799-1005 • F: (306) 786-2651

www.ramindustries.com • sales@ramindustries.com

www.linkedin.com/company/ram-industries-inc

www.ramindustries.com

Hydraulic Cylinder Design & Manufacturing • Precision Custom Machining

