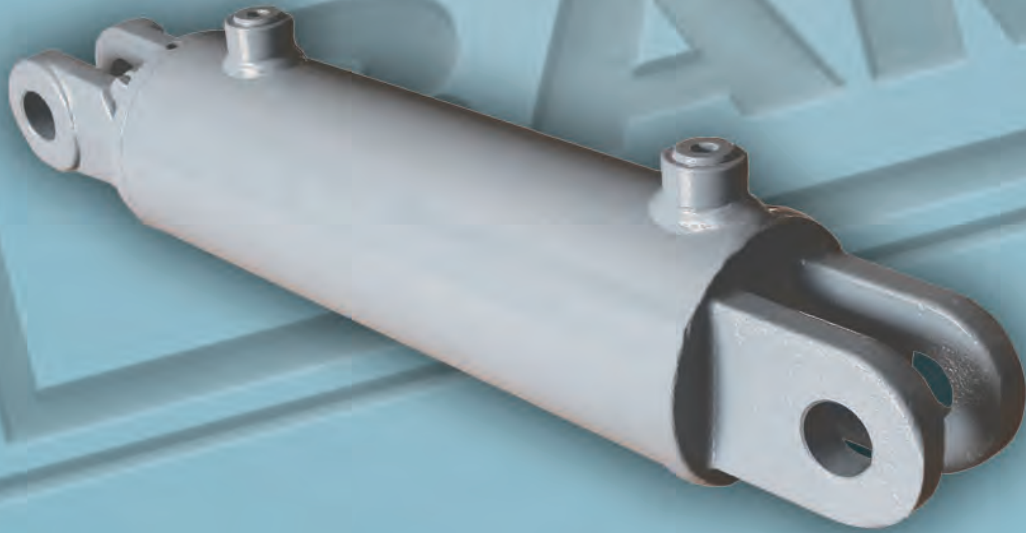




YORK WELDED CYLINDERS



OEM HYDRAULIC CYLINDER SPECIALISTS



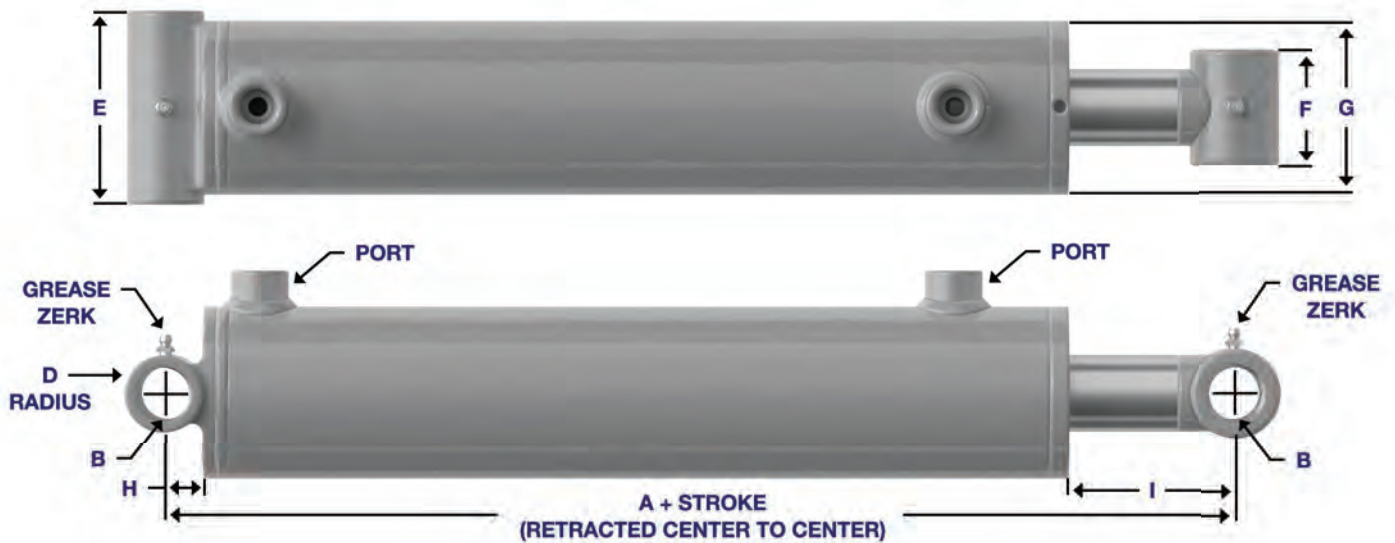
YORK WELDED SERIES

YORK Welded hydraulic cylinders are high-quality welded cylinders. Designed for performance, YORK welded cylinders have heavy duty pistons and piston stems. The internally threaded gland reduces the cross section and is easily removed for maintenance. YORK welded cylinders are well suited for light to medium duty applications.

STANDARD FEATURES

- | | |
|--|---|
| Intended Use: Double acting applications | Piston Material: Ductile iron 65-45-12 (ASTM A536) |
| Rated Pressure: 3000 PSI | Piston Locknut: High tensile grade C |
| Rod Material: High tensile SAE C1045, ground and polished hard chrome plated | Ports: SAE |
| Barrel Material: High tensile SAE C1026/St52.3 cold drawn tube precision honed for extended seal life | Port Plugs: High quality steel |
| Gland Material: Ductile iron 65-45-12 (ASTM A536) | Internal Seals: North American |
| | Paint Finish: 2 part urethane black |
| | Testing: 100% full cycle tested |

YORK CROSS TUBE



Bore Size (inches)	A	B	C	D	E	F	G	H	I	Ports
1.50	8.00	0.765	1.25	1.25	2.25	2.00	1.88	0.63	4.06	SAE-6
2.00	8.00	1.015	1.75	1.50	2.75	2.25	2.38	0.75	2.81	SAE-6
2.50	8.00	1.015	1.75	1.50	3.25	2.25	2.88	0.75	2.56	SAE-6
3.00	8.00	1.015	1.75	1.50	3.75	2.25	3.38	0.75	2.44	SAE-8
3.50	8.00	1.015	1.75	2.00	4.25	2.25	3.88	1.00	2.13	SAE-8
4.00	8.00	1.265	2.00	2.25	4.75	2.75	4.50	1.13	1.81	SAE-8

Measurements for A, B, C, D, E, F, G, H, I are in inches.

All specifications are subject to change without notice.



**YORK WELDED
CROSS TUBE CYLINDERS**

Bore Size (inches)	RAM Part Number	Stroke (inches)	Rod Diameter (inches)	Pin Center to Center (inches)		Ports	Pin Diameter Nominal (inches)	Maximum Rated Pressure & Column Load on Full Extension		Shipping Weight (lbs)
				Retracted	Extended			Pressure (PSI)	Load (lbf)	
1.50	R4507500	4	1.000	12	16	SAE-6	0.750	3000	5300	6
	R4507501	6		14	20					7
	R4507502	8		16	24					8
	R4507503	10		18	28					9
	R4507504	16		24	40					12
	R4507505	20		28	48					14
	R4507506	24		32	56					16
2.00	R4507507	4	1.250	12	16	SAE-6	1.000	3000	9425	10
	R4507508	6		14	20					12
	R4507509	8		16	24					13
	R4507510	10		18	28					14
	R4507511	12		20	32					16
	R4507512	14		22	36					17
	R4507513	16		24	40					19
	R4507514	18		26	44					20
	R4507515	20		28	48					21
	R4507516	24		32	56					24
	R4507517	30		38	68					29
	R4507518	32		40	72					30
	R4507519	36		44	80					33
	R4507520	40		48	88					36
	R4507521	48		56	104					42
2.50	R4507522	4	1.500	12	16	SAE-6	1.000	3000	14725	14
	R4507523	6		14	20					16
	R4507524	8		16	24					18
	R4507525	10		18	28					19
	R4507526	12		20	32					21
	R4507527	14		22	36					23
	R4507528	16		24	40					25
	R4507529	18		26	44					27
	R4507530	20		28	48					29
	R4507531	24		32	56					33
	R4507532	30		38	68					39
	R4507533	32		40	72					40
	R4507534	36		44	80					44
	R4507535	40		48	88					48
	R4507536	48		56	104					56

All specifications are subject to change without notice.
All weights are approximate shipping weights.

Bore Size (inches)	RAM Part Number	Stroke (inches)	Rod Diameter (inches)	Pin Center to Center (inches)		Ports	Pin Diameter Nominal (inches)	Maximum Rated Pressure & Column Load on Full Extension		Shipping Weight (lbs)
				Retracted	Extended			Pressure (PSI)	Load (lbf)	
3.00	R4507537	4	1.500	12	16	SAE-8	1.000	3000	21205	17
	R4507538	6		14	20					19
	R4507539	8		16	24					21
	R4507540	10		18	28					23
	R4507541	12		20	32					26
	R4507542	14		22	36					28
	R4507543	16		24	40					30
	R4507544	18		26	44					32
	R4507545	20		28	48			34		
	R4507546	24		32	56			38		
	R4507547	30		38	68			44		
	R4507548	32		40	72			46		
	R4507549	36		44	80			50		
	R4507550	40		48	88			55		
R4507551	48	56	104	63						
3.50	R4507552	4	1.750	12	16	SAE-8	1.000	3000	28860	24
	R4507553	6		14	20					26
	R4507554	8		16	24					29
	R4507555	10		18	28					31
	R4507556	12		20	32					34
	R4507557	14		22	36					37
	R4507558	16		24	40					39
	R4507559	18		26	44					42
	R4507560	20		28	48			44		
	R4507561	24		32	56			50		
	R4507562	30		38	68			57		
	R4507563	32		40	72			60		
	R4507564	36		44	80			65		
	R4507565	40		48	88			70		
R4507566	48	56	104	80						
4.00	R4507567	4	2.000	12	16	SAE-8	1.250	3000	37700	32
	R4507568	6		14	20					35
	R4507569	8		16	24					39
	R4507570	10		18	28					43
	R4507571	12		20	32					47
	R4507572	14		22	36					50
	R4507573	16		24	40					54
	R4507574	18		26	44					58
	R4507575	20		28	48			62		
	R4507576	24		32	56			69		
	R4507577	30		38	68			80		
	R4507578	32		40	72			84		
	R4507579	36		44	80			91		
	R4507580	40		48	88			98		
R4507581	48	56	104	113						

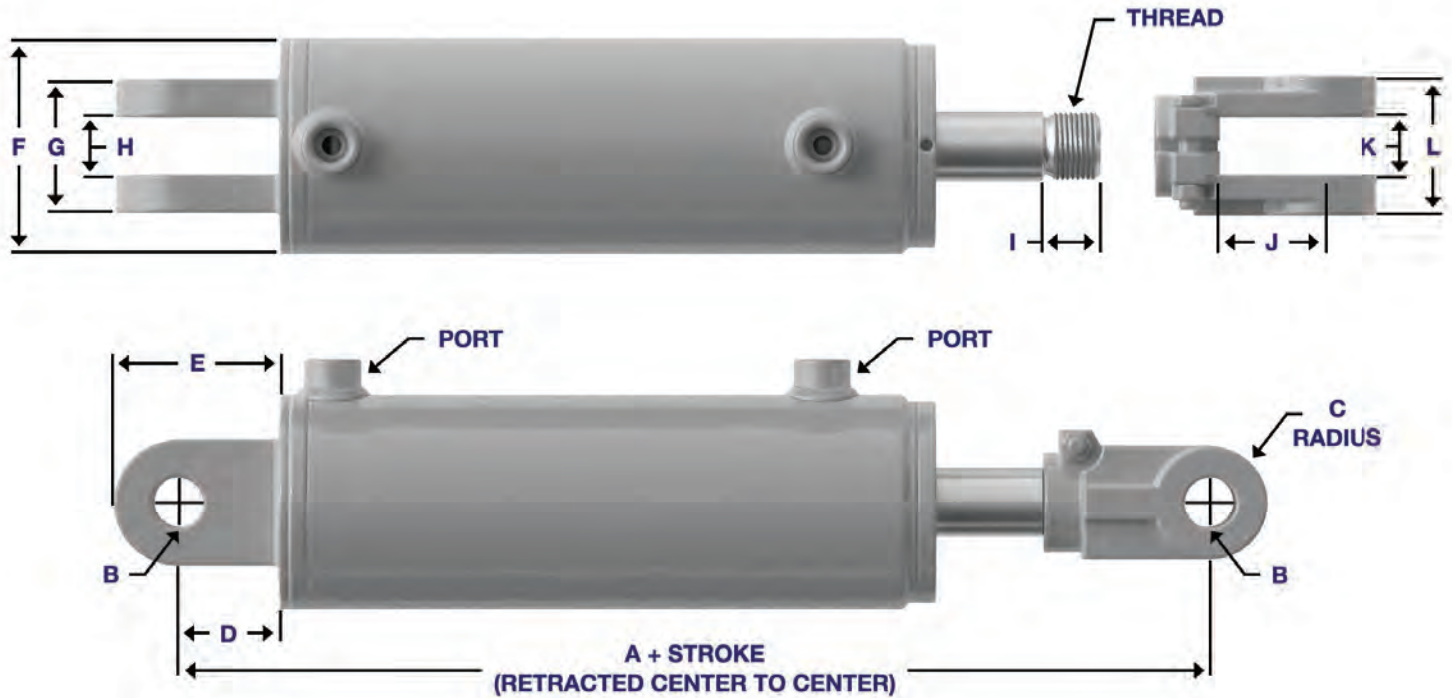
*Conforms to ASAE (American Society of Agricultural Engineers) specifications.

All specifications are subject to change without notice.
All weights are approximate shipping weights.



**YORK WELDED
CROSS TUBE CYLINDERS**

YORK CLEVIS



Bore Size (inches)	A	B	C	D	E	F	G	H	I	J	K	L	Ports	Thread
2.00	10.25*	1.015	1.13	2.00	3.25	2.38	2.13	1.13	1.13	2.00	1.13	2.75	SAE-6	1.250 - 12UNF
2.50	10.25*	1.015	1.13	2.00	3.25	2.88	2.13	1.13	1.13	2.00	1.13	2.75	SAE-6	1.250 - 12UNF
3.00	10.25*	1.015	1.13	2.00	3.25	3.38	2.13	1.13	1.13	2.00	1.13	2.75	SAE-8	1.250 - 12UNF
3.50	10.25*	1.015	1.13	2.00	3.25	3.88	2.38	1.13	1.13	2.00	1.13	2.75	SAE-8	1.250 - 12UNF
4.00	10.25*	1.015	1.13	2.00	3.25	4.50	2.63	1.13	1.13	2.00	1.13	2.75	SAE-8	1.250 - 12UNF

Measurements for A, B, C, D, E, F, G, H, I, J, K, L are in inches.

* For the standard ASAE (8" stroke) cylinders this dimension is 12.25".
All specifications are subject to change without notice.

Bore Size (inches)	RAM Part Number	Stroke (inches)	Rod Diameter (inches)	Pin Center to Center (inches)		Ports	Pin Diameter Nominal (inches)	Maximum Rated Pressure & Column Load on Full Extension		Shipping Weight (lbs)
				Retracted	Extended			Pressure (PSI)	Load (lbf)	
2.00	R4507600	4	1.250	14.25	18.25	SAE-6	1.000	3000	9425	13
	R4507601	6		16.25	22.25					14
	R4507602*	8		20.25	28.25					16
	R4507603	10		20.25	30.25					17
	R4507604	12		22.25	34.25					18
	R4507605	14		24.25	38.25					20
	R4507606	16		26.25	42.25					21
	R4507607	18		28.25	46.25					23
	R4507608	20		30.25	50.25					24
	R4507609	24		34.25	58.25					27
	R4507610	30		40.25	70.25					31
	R4507611	32		42.25	74.25					33
	R4507612	36		46.25	82.25					35
	R4507613	40		50.25	90.25					38
R4507614	48	58.25	106.25	44						
2.50	R4507615	4	1.500	14.25	18.25	SAE-6	1.000	3000	14725	16
	R4507616	6		16.25	22.25					18
	R4507617*	8		20.25	28.25					20
	R4507618	10		20.25	30.25					21
	R4507619	12		22.25	34.25					23
	R4507620	14		24.25	38.25					26
	R4507621	16		26.25	42.25					27
	R4507622	18		28.25	46.25					29
	R4507623	20		30.25	50.25					31
	R4507624	24		34.25	58.25					35
	R4507625	30		40.25	70.25					41
	R4507626	32		42.25	74.25					42
	R4507627	36		46.25	82.25					46
	R4507628	40		50.25	90.25					50
	R4507629	48		58.25	106.25					58

*Conforms to ASAE (American Society of Agricultural Engineers) specifications.

All specifications are subject to change without notice.

RAM York Cylinder Components			
Size	Item	RAM Part Number	Shipping Weight (lbs)
Fits 1 1/4" Shaft	Shaft Clevis	R7600455	3.30
Fits 1 1/2" Shaft	Shaft Clevis	R7600455	3.30
Fits 1 3/4" Shaft	Shaft Clevis	R7600455	3.30
Fits 2" Shaft	Shaft Clevis	R7600455	3.30
1" x 2 7/8"	Pin	R3006631	0.80
1" x 2 1/4"	Pin	R3006632	0.60
Hairpin Clip	Clip	R3006300	0.02

All specifications are subject to change without notice.
All weights are approximate shipping weights.

RAM York Cylinder Seal Kits		
Bore Size (inches)	RAM Part Number	Rod Diameter (inches)
1.50	R3607500	1.000
2.00	R3607507	1.250
2.50	R3607522	1.500
3.00	R3607537	1.500
3.50	R3607552	1.750
4.00	R3607567	2.000

All specifications are subject to change without notice.
All weights are approximate shipping weights.



**YORK WELDED
CLEVIS CYLINDERS**

Bore Size (inches)	RAM Part Number	Stroke (inches)	Rod Diameter (inches)	Pin Center to Center (inches)		Ports	Pin Diameter Nominal (inches)	Maximum Rated Pressure & Column Load on Full Extension		Shipping Weight (lbs)
				Retracted	Extended			Pressure (PSI)	Load (lbf)	
3.00	R4507630	4	1.500	14.25	18.25	SAE-8	1.000	3000	21205	19
	R4507631	6		16.25	22.25					21
	R4507632*	8		20.25	28.25					24
	R4507633	10		20.25	30.25					25
	R4507634	12		22.25	34.25					27
	R4507635	14		24.25	38.25					29
	R4507636	16		26.25	42.25			31		
	R4507637	18		28.25	46.25			33		
	R4507638	20		30.25	50.25			35		
	R4507639	24		34.25	58.25			40		
	R4507640	30		40.25	70.25			46		
	R4507641	32		42.25	74.25			48		
	R4507642	36		46.25	82.25			52		
	R4507643	40		50.25	90.25			56		
R4507644	48	58.25	106.25	64						
3.50	R4507645	4	1.750	14.25	18.25	SAE-8	1.000	3000	28860	23
	R4507646	6		16.25	22.25					26
	R4507647*	8		20.25	28.25					30
	R4507648	10		20.25	30.25					31
	R4507649	12		22.25	34.25					34
	R4507650	14		24.25	38.25					36
	R4507651	16		26.25	42.25			39		
	R4507652	18		28.25	46.25			41		
	R4507653	20		30.25	50.25			44		
	R4507654	24		34.25	58.25			49		
	R4507655	30		40.25	70.25			57		
	R4507656	32		42.25	74.25			60		
	R4507657	36		46.25	82.25			65		
	R4507658	40		50.25	90.25			70		
R4507659	48	58.25	106.25	80						
4.00	R4507660	4	2.000	14.25	18.25	SAE-8	1.000	3000	37700	30
	R4507661	6		16.25	22.25					33
	R4507662*	8		20.25	28.25					39
	R4507663	10		20.25	30.25					41
	R4507664	12		22.25	34.25					45
	R4507665	14		24.25	38.25					48
	R4507666	16		26.25	42.25			52		
	R4507667	18		28.25	46.25			56		
	R4507668	20		30.25	50.25			59		
	R4507669	24		34.25	58.25			67		
	R4507670	30		40.25	70.25			78		
	R4507671	32		42.25	74.25			82		
	R4507672	36		46.25	82.25			89		
	R4507673	40		50.25	90.25			96		
R4507674	48	58.25	106.25	111						

*Conforms to ASAE (American Society of Agricultural Engineers) specifications.

All specifications are subject to change without notice.
All weights are approximate shipping weights.



RAM INDUSTRIES INC.

PO Box 5007 33 York Rd E Yorkton, SK S3N 3Z4 Canada

T: 1-877-799-1005

www.ramindustries.com • sales@ramindustries.com

www.linkedin.com/company/ram-industries-inc

www.ramindustries.com

Hydraulic Cylinder Design & Manufacturing • Precision Custom Machining

